

**application:**

"We are particularly pleased that now they can get into the club's field without slowing down and not waiting for an open barrier," said Jenna, a UHF reader from UK customers.

"The reader is good to upgrade existing parking equipment to customers, RFID parking systems and software can be easily installed and integrated into any previously created obstacles and doors. Thanks!" Said Mercy of our EU customer distribution UHF reader. "

**The main selling point:**

Frequency 860 ~ 868MHz, 902 ~ 928MHz frequency band (frequency customization optional)

Antenna 12dbi

The maximum reading distance is 8-15m

Protocols ISO18000-6B, ISO18000-6C (EPC CLASS1 G2)

Transmission mode HSS or fixed frequency transmission

Software #, VB, Delphi demo; C #, Java, VC SDK

Interface RS232, RS485, Wiegand, TCP / IP & Wifi (optional).

\* The effective distance depends on the label, the reader, and the environment.

**other:**

Power supply 8-12V

Read Speed One Tag 64-bit ID <6ms

Linear polarization

Indicates buzzer and LED indicators

Working humidity: 20% ~ 95%

The size of 227mm × 227mm × 60mm

Weight: 2.5KG

Delivery time is usually 3-5 working days

**Standard wiring**

Red: + 12VDC Black: GND

Green: DATA0 or 485R-Brown: 232XD

White: DATA1 or 485R + Yellow: 232TXD

Gray: Trigger blue: GND

The uff card reader module is connected to the controller



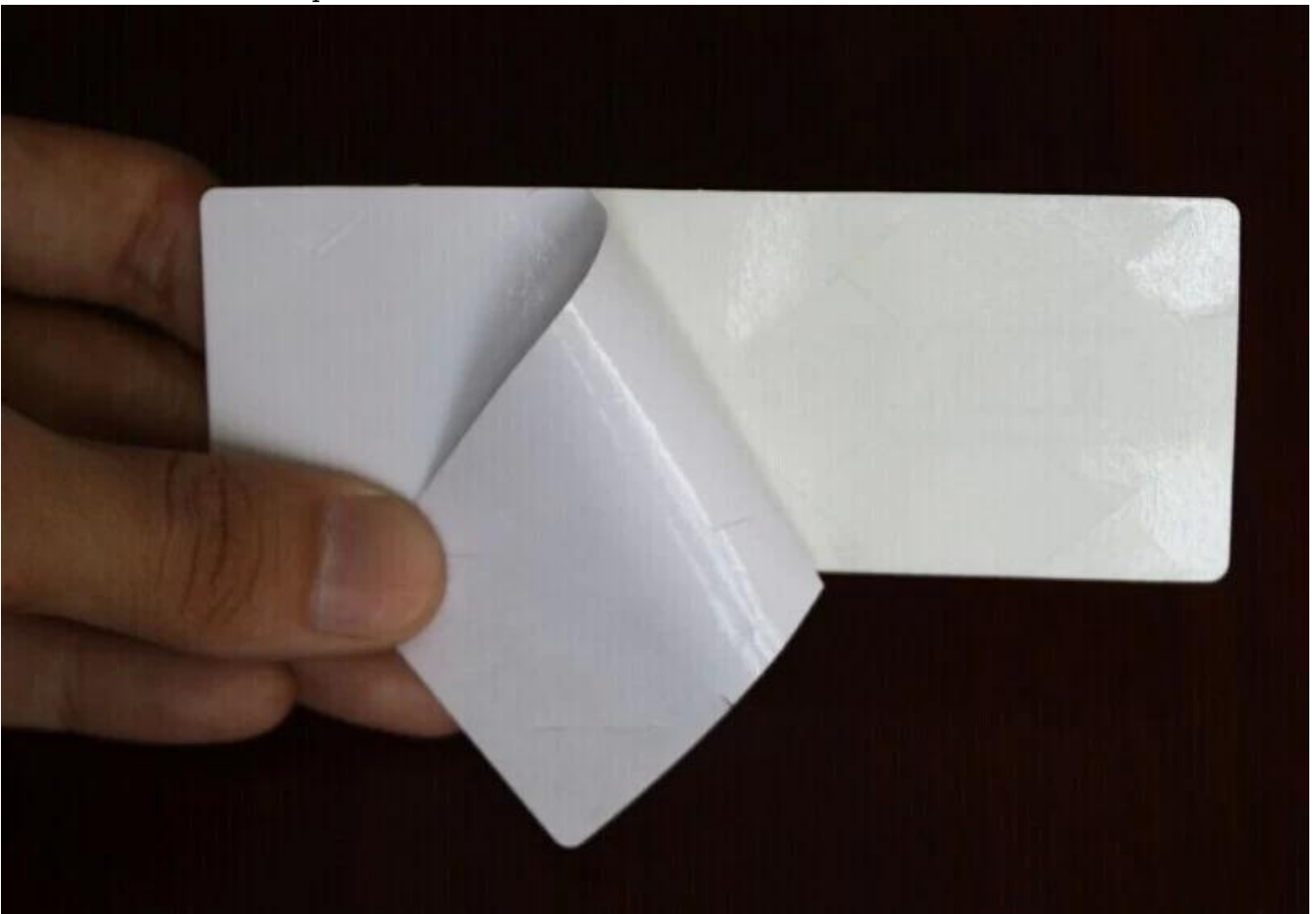
Uff rfid reader module prices include:



Uff rfid reader module on-site installation price



Uff card reader module price read other UHF card



Please contact us for more types.